

## UnionBank Trust and Investment Services Group

### UBP Dollar Bond Portfolio

as of October 31, 2013

#### Investment Objective

The UnionBank Dollar Bond Portfolio is a US Dollar-denominated fund that seeks the total return of a diversified portfolio of foreign currency fixed-income instruments.

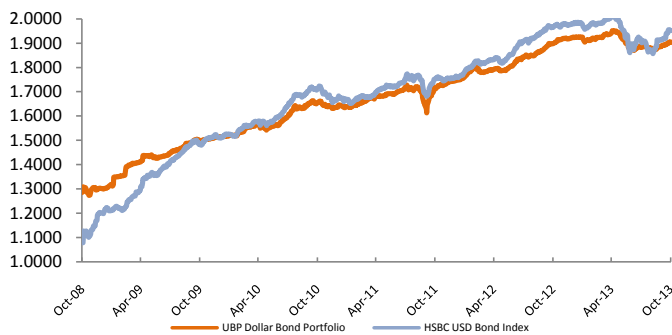
#### Fund Performance

Calendar Absolute Returns*	Dollar Bond	HSBC USD Bond Index
YTD	-0.94%	-1.59%
2012	10.19%	12.73%
2011	6.23%	5.54%
2010	8.05%	10.31%
2009	16.24%	25.42%
2008	0.45%	-6.50%
Cumulative Annualized Returns*	Dollar Bond	HSBC USD Bond Index
3yr period	4.79%	4.52%
5yr period	8.17%	12.67%

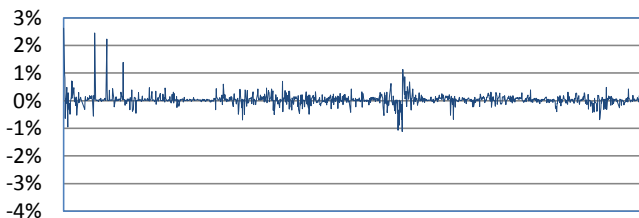
\*Returns are reported net of fees.

Net Asset Value (NAV)	NAV Per Unit (NAVpu)
USD 10.366Million	USD 1.903865
Par Value:	USD 1.00

#### Net Asset Value per Unit



#### Daily Percentage Change of NAVpu



31-Oct-08

31-Oct-13

#### Risk Characteristics:

One day VAR at 3σ:	0.35%
Volatility, Past 360 Days:	2.21%
Duration:	2.44
Sharpe Ratio (Risk Free Rate = 0.1675%):	0.06

Volatility is a measure of fluctuation of the NAVpu. Higher volatility means higher potential for gains or losses. Duration measures the sensitivity of the portfolio to interest rate movements. The higher the duration, the more the NAVpu will change with interest rate fluctuation. The Sharpe Ratio is a measure of risk-adjusted return. The higher the Sharpe, the higher the return per unit of risk. Risk-free rate used to compute the Sharpe ratio is the 1yr US TBill rate.

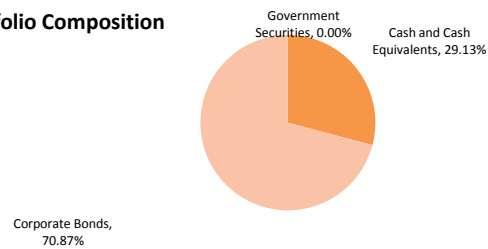
#### Fund Manager's Report

US Treasuries rose by 5-15 bps for the month of October on the back of pronouncements from the FOMC in its October meeting that the US continued to perform on a modest to moderate growth due to strong housing and job growth. US GDP for the 3Q13 registered at 2.8% vs. estimates of 2%. Unemployment rate rose slightly from 7.3% vs. estimates of 7.2%, a sign that the market has surged off the negative sentiment caused by the 16-day US government shutdown.

US Treasury yields are already back to a high of 2.77% from a recent low of 2.5%. The market is now looking to range until further developments in the US monetary and fiscal front materialize. Market is looking at the likely confirmation of Janet Yellen on November 14 to replace Ben Bernanke as Fed Chairman when retires in end-Jan 2014.

Philippine dollar denominated sovereign debt ("ROPs") continue to track US yields higher with the back-end moving higher by an average of 25-50 bps. Moving forward, we expect ROPs to range as well due to the volatile US yields.

#### Portfolio Composition



#### Maturity Profile

Greater than 7 years	3.35%
5 years to 7 years	6.58%
3 years to 5 years	38.80%
1 year to 3 years	17.64%
Less than 1 year	33.64%

#### Top 5 Holdings

Travellers Int'l Hotel Group Inc.	6.900%	11/3/2017	12.35%
Vista Land & Landscapes	6.75%	10/04/2018	9.56%
Alliance Global	6.500%	08/18/2017	8.25%
Banco De Oro	3.875%	04/22/2016	7.26%
SM Investment	4.250%	10/17/2019	6.58%

#### Fund Facts

Classification:	Medium-term Dollar Bond Fund
Launch Date:	January 12, 2004
Client Suitability:	Moderately conservative to Moderately aggressive risk tolerance
Base currency:	United States Dollar
Initial Investment:	Usd 2,000
Minimum Additional Investment:	Not Applicable
Minimum Holding Period:	90 calendar days
Settlement Period:	One (1) Banking day after initial notice
Early Redemption Charge:	0.25% or Usd 10 whichever is higher
Ave. Gross Market Value for the Qtr.	USD 11,050,545.12
Trust Fees <sup>3</sup> :	0.75% per annum; 0.19% for the quarter
Audit Fees <sup>3</sup> :	0.0019% for the quarter
Custodianship Fees <sup>3</sup> :	0.003% for the quarter
Applicable Tax:	7.5% on interest income
Custodian:	HSBC, Ltd Philippines
External Auditor:	Punong-bayan & Araullo
Dealing Time:	Daily up to 12 noon
Available Thru:	Unionbank of the Philippines branches
Bloomberg Ticker:	IFPHDLB
* All fees are accrued daily against the fund's total market value.	

## **UnionBank Trust and Investment Services Group**

UBP Dollar Bond Portfolio

### **FOOTNOTES:**

#### **<sup>1</sup>FUND VALUATION**

All assets of the Fund shall be marked to market daily in accordance with existing BSP rules and regulations on marking to market valuation of investment instruments. The pricing valuation methodology shall use the following price sources as bases for computing NAVPu.

*Philippine Equity Securities: Philippine Stock Exchange Closing Levels, 3:30 pm daily*

*Other instruments: Closing prices as prescribed by BSP regulations and market conventions*

Valuation Day shall mean any day in which banks are open for business in Manila.

The value of the NAVPu at the start of Fund's operation shall be: Php 100.00

The Admission and Redemption NAVPu of the fund shall be computed 4:30pm of each business day and/or after markets close and shall be available to investors by 9:00 am of the next banking day.

All mark-to-market valuation procedures are in accordance with BSP Memorandum No. M-2007-005 dated February 28, 2007.

#### **<sup>2</sup>PROSPECTIVE INVESTMENTS**

The Fund may be invested and reinvested in:

- i. Securities issued by or guaranteed by the Philippine government, or the Bangko Sentral ng Pilipinas;
- ii. Exchange-listed securities;
- iii. Marketable instruments that are traded in an organized exchange;
- iv. Loans traded in an organized market;
- v. Savings/Checking accounts and/or time deposits in any bank or financial institution, including UnionBank of the Philippines;
- vi. Derivative instruments for the purpose of hedging market risk exposures.
- vii. Such other tradable investment outlets/ categories as the BSP may allow.

A complete list of holdings is available upon request.

#### **<sup>3</sup>FEES & EXPENSES**

The Trustee shall collect from the Fund trust fees in the amount of THREE-QUARTERS PERCENT (0.75%) per annum based on the Gross Market Value of the Fund which shall be accrued daily and shall be collectible from the Fund at the end of every calendar month.

The Trustee may charge the Fund for special expenses if the same is necessary to preserve or enhance the value of the Fund. Such special expenses shall be payable to pertinent third party or parties covered by separate contract/s, and disclosed to the Participants.

**An investor should read the complete details of the fund in the Plan Rules, and should carefully consider the fund's investment objectives, risks, charges and expenses. He then should make his own risk assessment and, when necessary, seek independent/professional opinion before making an investment.**