

UnionBank Trust and Investment Services Group

UBP Peso Balanced Portfolio
as of December 31, 2013

Investment Objective

The UnionBank Peso Balanced Portfolio is a peso-denominated fund that provides investors access to a diversified set of investment instruments in both equities and fixed income markets.

Fund Performance

Calendar Absolute Returns*	Peso Balanced	Benchmark**
2013	4.67%	2.26%
2012	21.29%	19.10%
Feb-Dec 2011	7.44%	1.86%

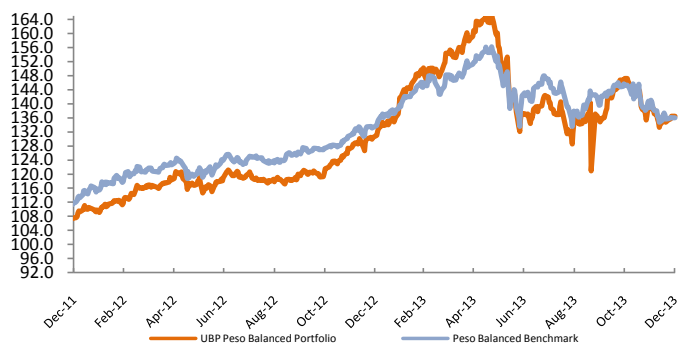
* Returns are reported net of fees.

**50% in the PSEi Index and 50% in the HSBC 1-5 Year Phil Bond Index

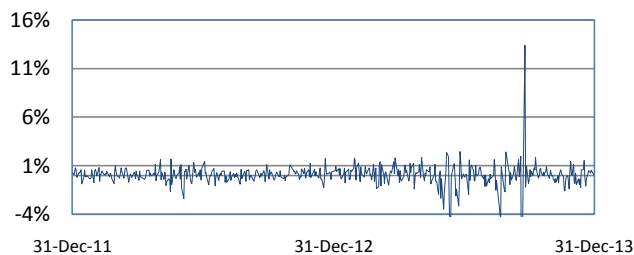
Net Asset Value (NAV)	NAV Per Unit (NAVpu)	Par
Php 704.537Million	Php 136.473253	Par

Value: Php 100.00

Net Asset Value per Unit



Daily Percentage Change of NAVpu



Risk Characteristics:

One day VAR at 3σ:	4.04%
Volatility, Past 360 days	25.44%
Duration:	1.36
Sharpe Ratio (Risk-Free Rate = 0.640%):	0.16

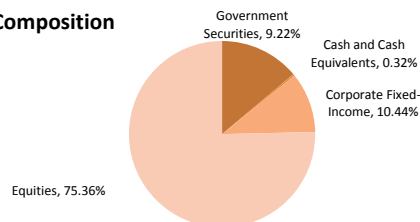
Volatility is a measure of fluctuation of the NAVpu. Higher volatility means higher potential for gains or losses. Duration measures the sensitivity of the portfolio to interest rate movements. The higher the duration, the more the NAVpu will change with interest rate fluctuation. The Sharpe Ratio is a measure of risk-adjusted return. The higher the Sharpe, the higher the return per unit of risk. Risk-free rate used to compute the Sharpe ratio is the 1yr TBill rate.

Fund Manager's Report

The major theme that ended the year was centered on the news that the FED tapering announcement. In an official statement, Ben Bernanke outgoing FED chairman said that the US Central Bank will be tapering its current bond buying purchases by \$10Billion in January with successive reduction of \$10Billion per month after depending on the evolution of economic data in 2014. In January 2014, the FOMC announced that it would lower its monthly Treasury purchases to \$40Billion and \$35Billion in mortgaged backed securities.

Bangko Sentral ng Pilipinas (BSP) kept its benchmark rate unchanged at 3.5%. The Monetary Board said that while inflation forecasts have slightly risen due to recent increase in global oil prices, utility rate adjustments and the impact of recent typhoon Haiyan, the future inflation path continues to be within the target over the policy horizon since the uptick is expected to be largely transitory.

Portfolio Composition



Maturity Profile of Fixed-Income Holdings

3 years to 5 years	0.00%	17.41%
Less than 1 year	0.00%	7.22%

Top 5 Holdings

San Miguel Purefoods	15.80%
Emperador Distillery Inc	14.26%
Universal Robina Corp	13.42%
RTB 10-04	8.35%
Rizal Banking Corp	7.98%

Fund Facts

Classification:	Medium to Long-term Bond Fund
Launch Date:	February 15, 2011
Client Suitability:	Moderately Aggressive to Aggressive risk tolerance
Base currency:	Philippine Peso
Initial Investment:	Php 100,000
Minimum Additional Investment:	Not Applicable
Minimum Holding Period:	90 calendar days
Settlement Period:	Four (4) Banking days after initial notice
Early Redemption Charge:	0.25% or Php 500 whichever is higher
Ave. Gross Market Value for the Qtr.	PhP 730,821,933.78
Trust Fees ³ :	2% per annum on equity holdings 1% per annum on fixed income holdings 0.25% per annum of pooled funds; 0.45% for the quarter
Audit Fees ³ :	0.0018% for the quarter
Custodianship Fees ³ :	0.0045% for the quarter
Applicable Tax:	20% on interest income Sales tax on equity sales
Custodian:	HSBC, Ltd Philippines
External Auditor:	Punongbayan & Araullo
Dealing Time:	Daily up to 12noon
Available Thru:	Unionbank of the Philippines branches
Bloomberg Ticker:	UNPESBA
* All fees are accrued daily against the fund's total market value.	

UnionBank Trust and Investment Services Group

UBP Peso Balanced Portfolio

FOOTNOTES:

¹FUND VALUATION

All assets of the Fund shall be marked to market daily in accordance with existing BSP rules and regulations on marking to market investment instruments. The pricing valuation methodology shall use the following price sources as bases for computing NAV

Philippine Equity Securities: Philippine Stock Exchange Closing Levels, 3:30 pm daily

Other instruments: Closing prices as prescribed by BSP regulations and market conventions

Valuation Day shall mean any day in which banks are open for business in Manila.

The value of the NAVPu at the start of Fund's operation shall be: Php 100.00

The Admission and Redemption NAVPu of the fund shall be computed 4:30pm of each business day and/or after markets close to investors by 9:00 am of the next banking day.

All mark-to-market valuation procedures are in accordance with BSP Memorandum No. M-2007-005 dated February 28, 2007

²PROSPECTIVE INVESTMENTS

The Fund may be invested and reinvested in:

- i. Debt securities issued by or guaranteed by the Philippine government, or the Bangko Sentral ng Pilipinas;
- ii. Unit Investment Trust Funds and Mutual Funds;
- iii. Exchange-listed marketable securities and funds;
- iv. Loans traded in an organized market;
- v. Savings/Checking accounts and/or time deposits in any bank or financial institution, including UnionBank of the Philippines;
- v. Derivative instruments for the purpose of hedging market risk exposures of the existing investments of the Fund in accordance with the Bank's risk management and hedging policy duly approved by the Trust Committee.
- vi. Other such tradable investment outlets/categories as the BSP may allow.

A complete list of holdings is available upon request.

³FEES & EXPENSES

The Trustee shall collect from the Fund trust fees in the amount of ONE-QUARTER PERCENT (0.25%) per annum on the Gross Market Value of the Fund which shall be accrued daily and shall be collectible from the Fund at the end of every calendar month.

The Trustee may charge the Fund for special expenses if the same is necessary to preserve or enhance the value of the Fund. Such expenses shall be payable to pertinent third party or parties covered by separate contract/s, and disclosed to the Participants.

An investor should read the complete details of the fund in the Plan Rules, and should carefully consider the fund's investment charges and expenses. He then should make his own risk assessment and, when necessary, seek independent/professional advice before making an investment.

aza
ue cor. Onyx &
ls, Ortigas Center
5
6388 Fax: (632) 636 6289
nkph.com

rket valuation of
Pu.

ie and shall be available

'.

e

id in

oled funds based on the
alendar month.

if the Fund. Such special
pants.

e nt objectives, risks,
opinion before making